



# SOVELIA Monitor

Sovelia Monitor is an Application Performance Management (APM) system that observes the performance and efficiency of Sovelia PLM. The main purpose of the tools is to detect declines in the server's performance, so the cause can be taken care of before more serious consequences arise. It also gives valuable historical data about the actions on the Sovelia server, which can be used to clarify the cause of the error. This will help to prevent it from happening again.

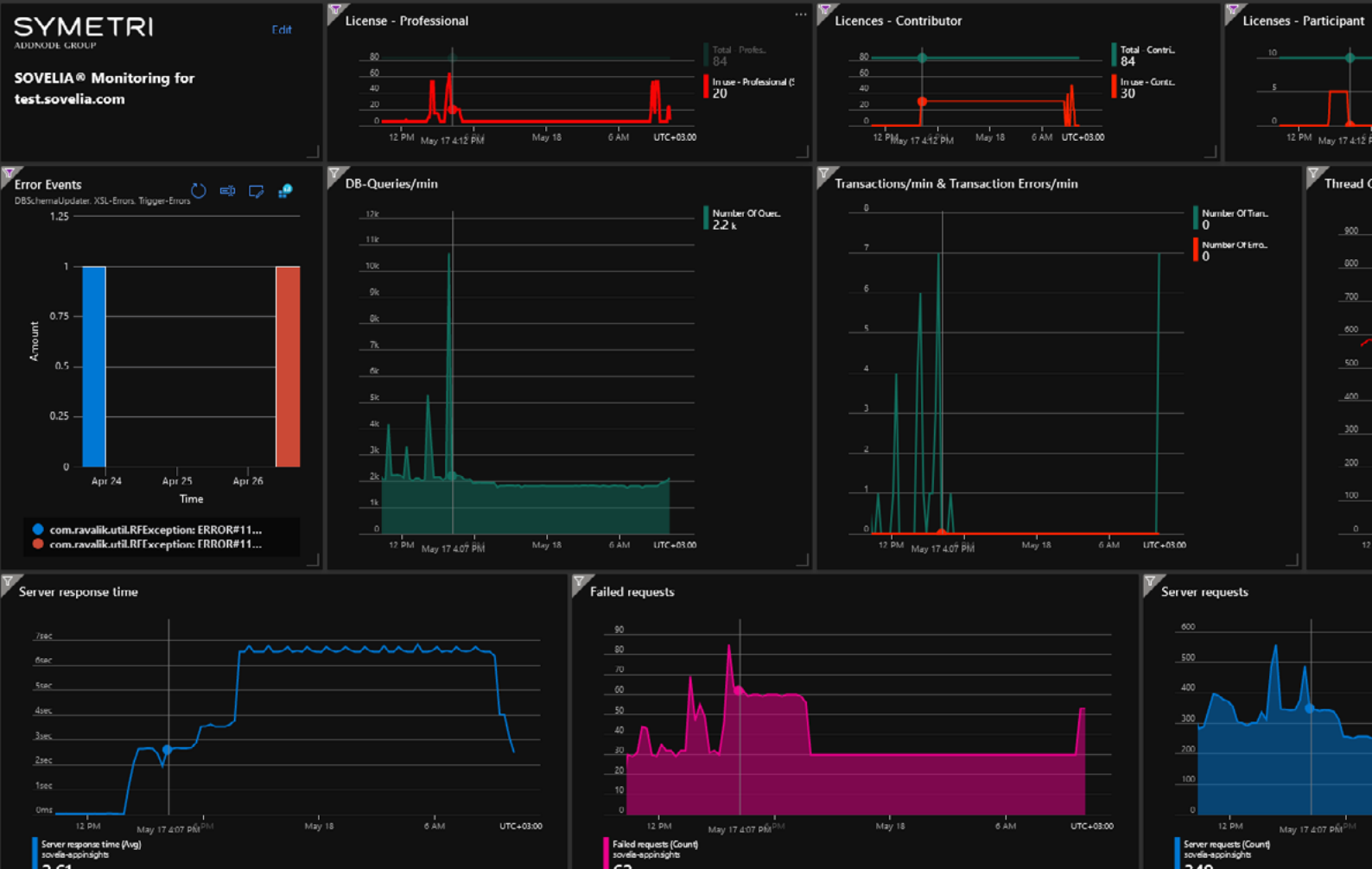
Sovelia Monitor is a module available with Sovelia PLM, making it easy to activate and take into use. It collects performance related data from Sovelia server and sends it towards to Application Insights APM service, which is part of Microsoft Azure cloud computing services. Application Insights analyses and visualises the data, giving real time information about changes in performance and its possible exceptions. Data handling consists of two tasks:

1

Some of the data can be useful without further analysis, such as information about purchased licences and licences in use. This information can be used to streamline the number of active licences of the software. It can also be used to monitor maximum usage of licenses, helping to estimate the need for additional ones.

2

The other data provided can be utilised in detecting and preventing the reasons behind reduction in performance. This gives an ability to increase server availability time as well as information to help in optimising the system performance.



## Key takeaways:

- ✓ Monitor server performance
- ✓ Monitor license usage
- ✓ Offered as a service
- ✓ Ability to gather anonymous or user specific information
- ✓ No additional installation
- ✓ GDPR compliant

Learn more:  
[www.sovelia.com](http://www.sovelia.com)

Contact us:  
[info@sovelia.com](mailto:info@sovelia.com)



Solutions by  
**SYMETRI**  
 ADDNODE GROUP