



SOVELIA®

A SYMETRI TECHNOLOGY



STREAMLINED PRODUCT LIFECYCLE MANAGEMENT WITH SOVELIA CORE

WEBINAR JUNE 2024



HEAD OF PRODUCT, SOVELIA

TIM RAY

22 years with Symetri

Mechanical focus

Data management

Business process reviews

Solving customer problems

Helping customers achieve





QUESTION:

What is the most important asset your organization possesses?



What is the most important asset your organization possesses?

01

PEOPLE

02

PRODUCTS

03

BRAND



04

SHARE PRICE

05

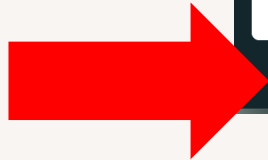
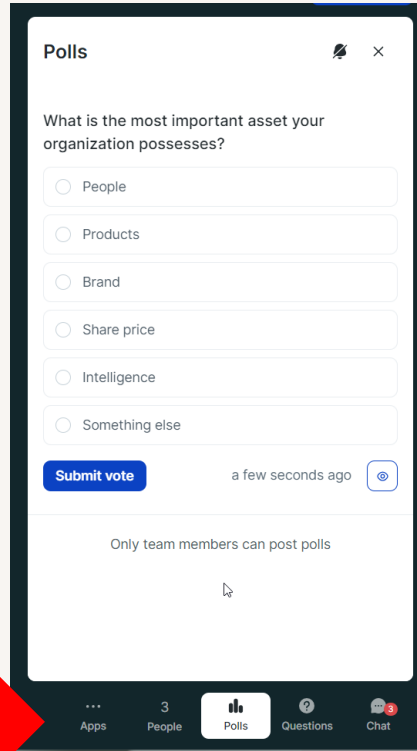
INTELLIGENCE

06

SOMETHING ELSE



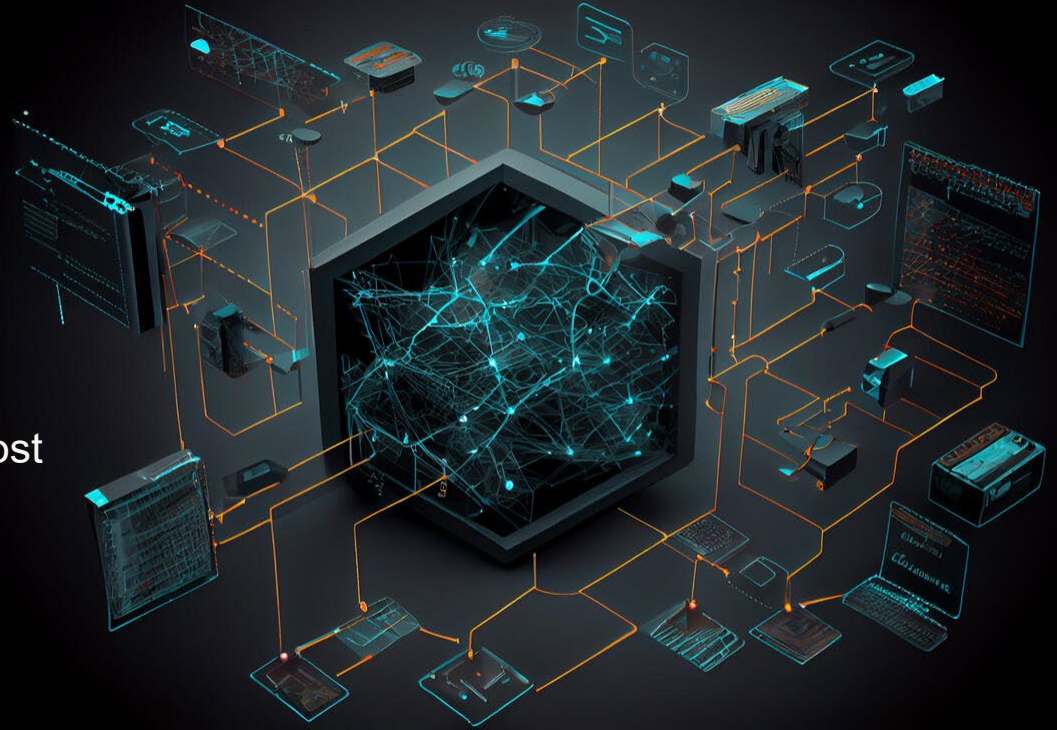
What is the most important asset your organization possesses?





WE BELIEVE

At Symetri we believe that data is the most important asset your organisation owns





QUESTION:

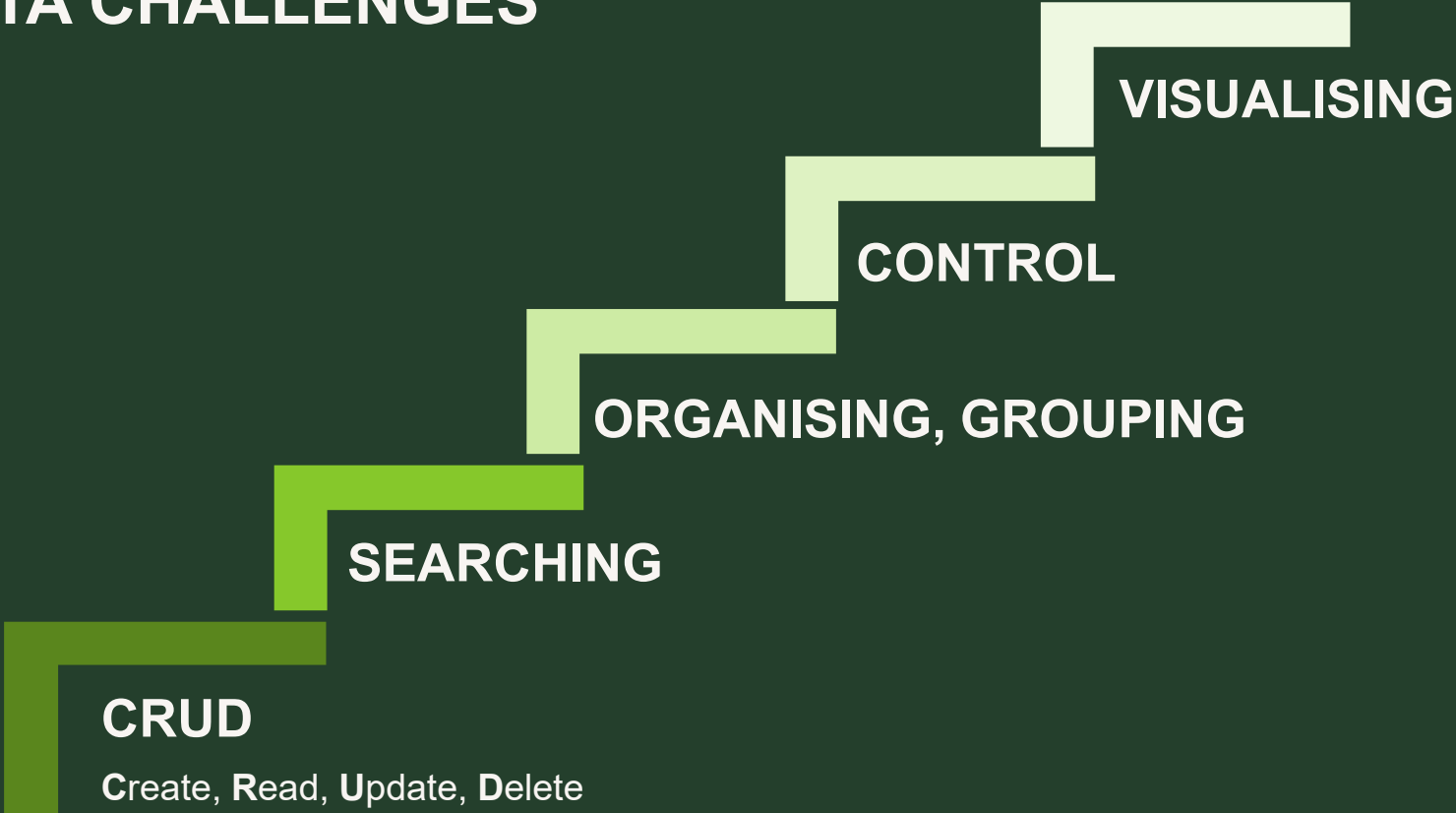
What are the challenges around data that companies face?

QUESTION:

How does Sovelia Core help resolve those challenges?



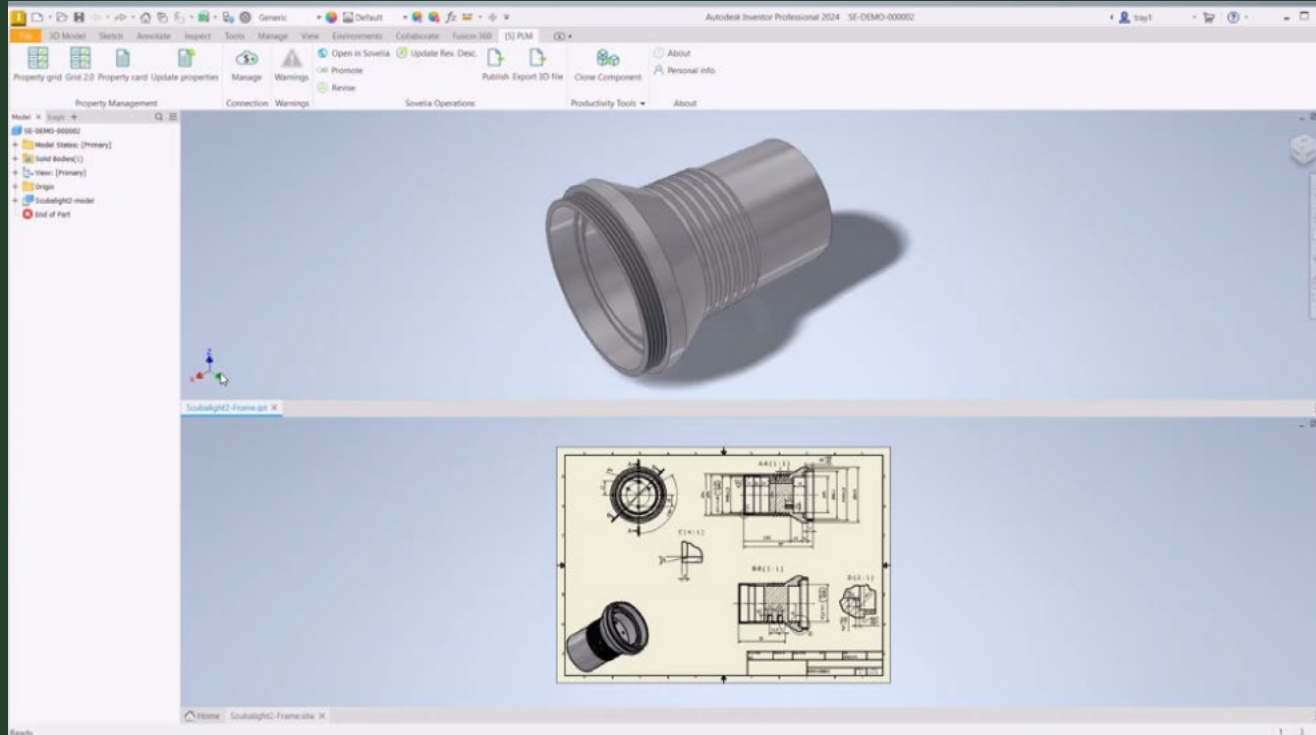
DATA CHALLENGES



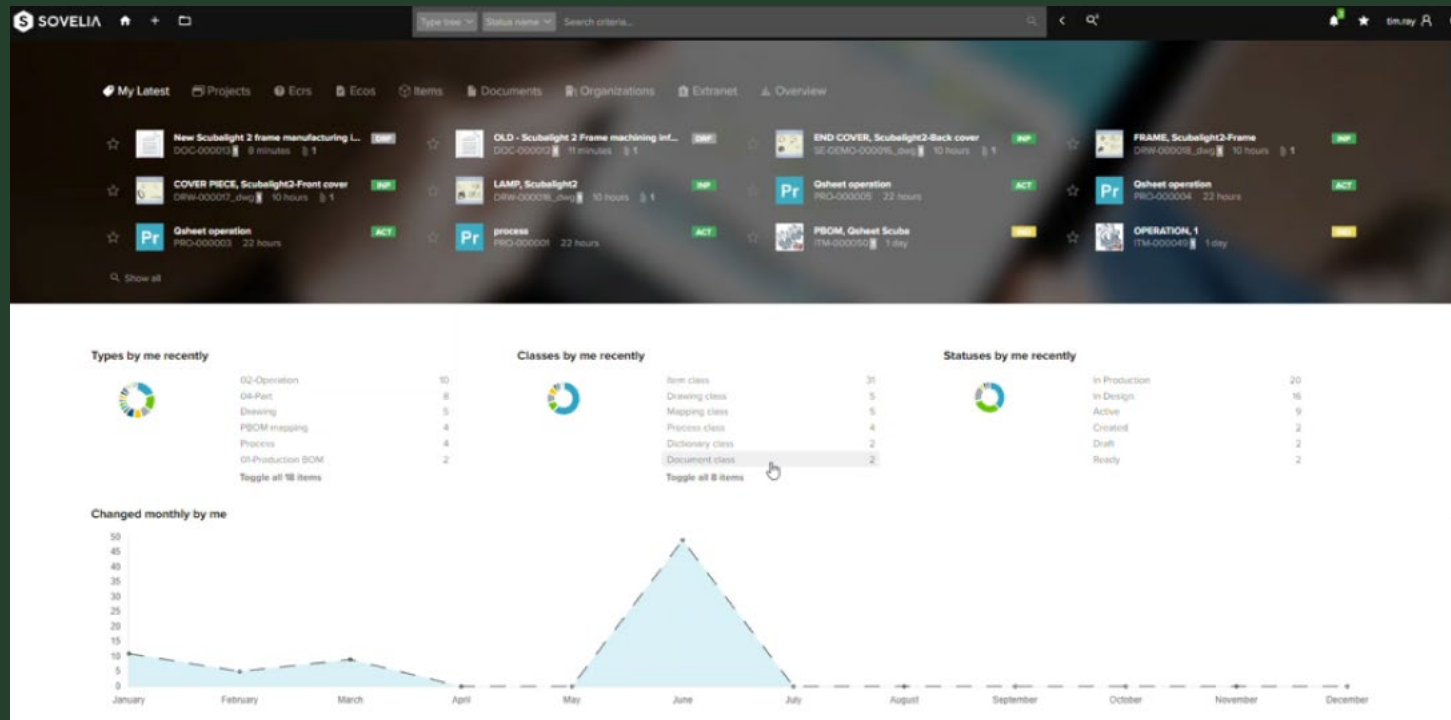


CRUD

Create, Read, Update, Delete



SEARCHING



ORGANISING, GROUPING



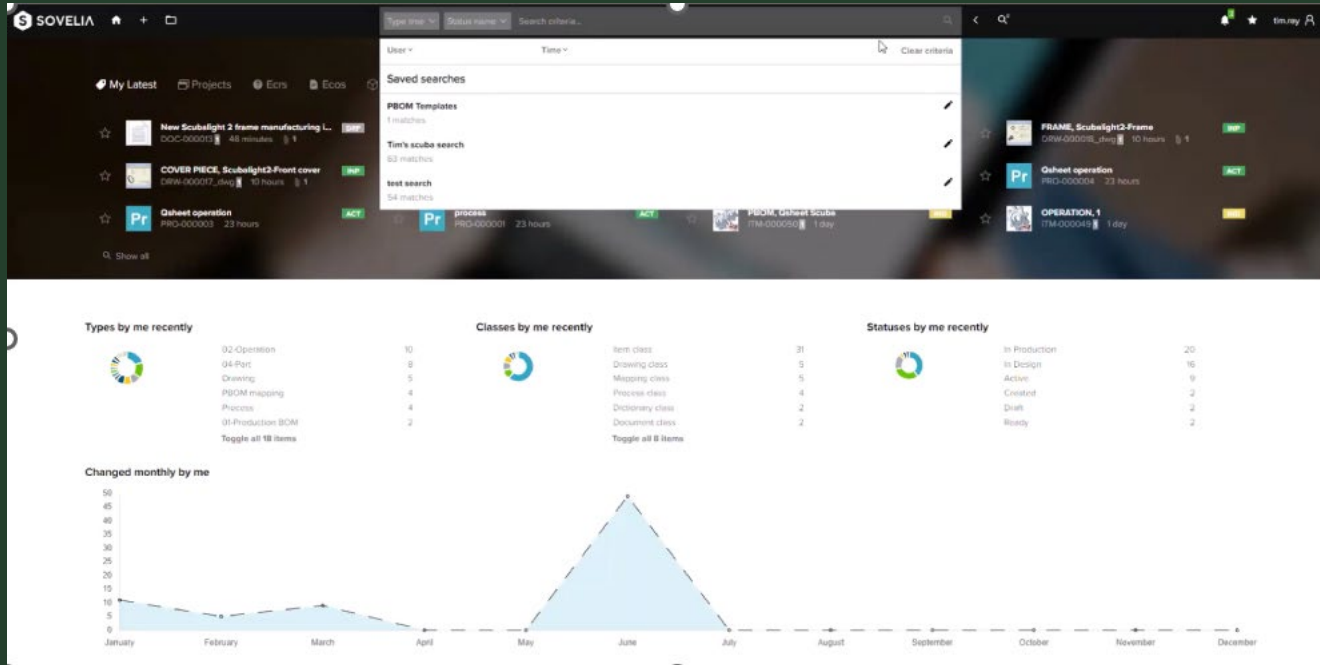
SOVELIA

Update PBCOM My latest viewed My latest edited My locked Items Documents All Built Demo OPTIC PCB

Type tree Status name My latest viewed X Search in structure

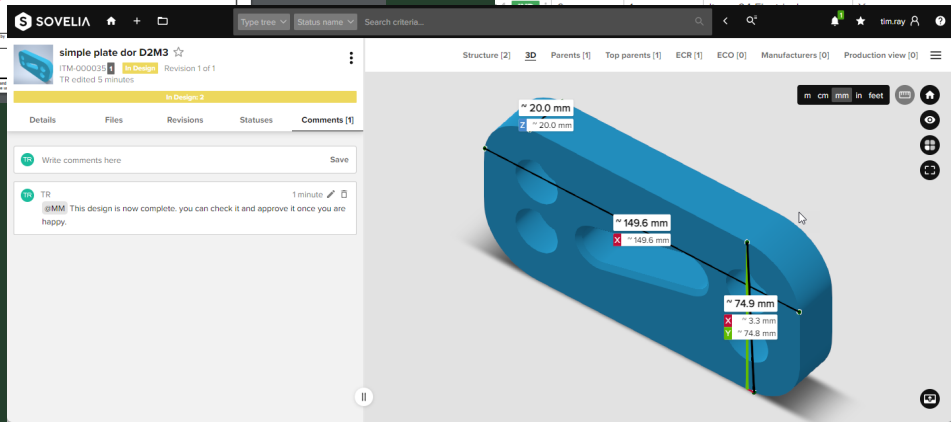
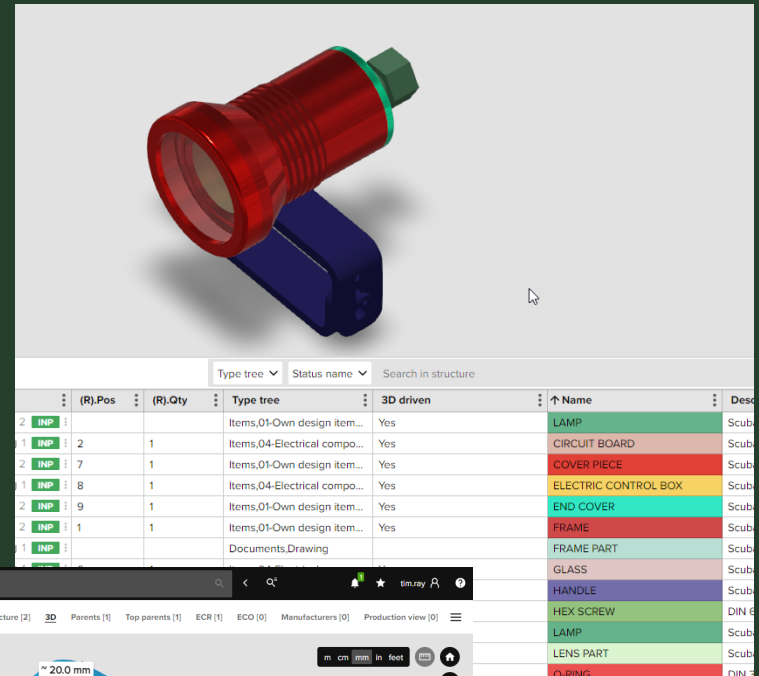
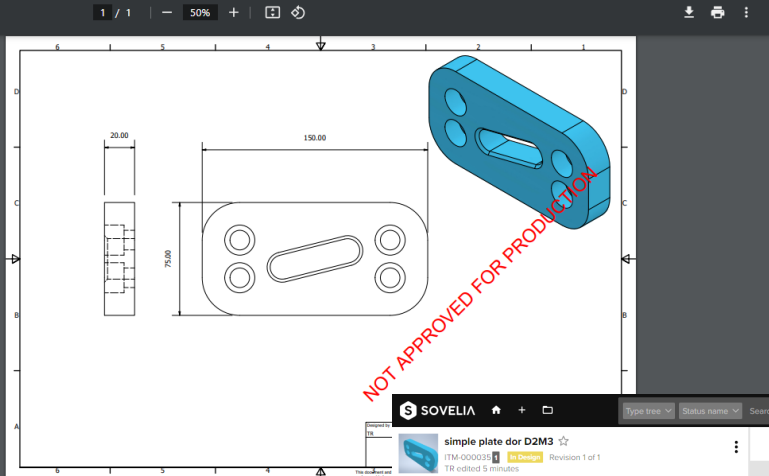
Automatic	Type tree	Name	Description	Item type	Unit	Weight (kg)
LAMP, Scubalight2 ITM-00018 11 months 2	Items,01-Oven design items,01-Main assembly	LAMP	Scubalight2	1-in house design	pcs	0.55
FRAME, Scubalight2-Frame ITM-0048 17 minutes 3	Items,01-Oven design items,04-Part	FRAME	Scubalight2-Frame	1-in house design	pcs	0.26
New Scubalight 2 frame manufacturing information DOC-000019 18 minutes 1	Documents,Document		New Scubalight 2 frame man...			
FRAME, Scubalight2-Frame DRW-000018.dwg 10 hours 1	Documents,Drawing	FRAME	Scubalight2-Frame			
OLD - Scubalight 2 Frame machining information DOC-000012 22 minutes 1	Documents,Document		OLD - Scubalight 2 Frame ma...			
LOWER PART, Goodman handle part2 ITM-00472 10 hours 1	Items,01-Oven design items,04-Part	LOWER PART	Goodman handle part2	1-in house design	pcs	0.02
Scubalight torch project PRJ-00000000 10 hours	Projects,Project		Scubalight torch project			
LAMP, Scubalight2 ITM-00018 1 hour 2	Items,01-Oven design items,01-Main assembly	LAMP	Scubalight2	1-in house design	pcs	0.55
Develop compact version of scubalight ECO-000008 7 months	Change management,Engineering change order (EC...		Develop compact version of ...			
Develop compact version of scubalight ECR-000013 7 months	Change management,Engineering change request (L...		Develop compact version of ...			
LAMP, Scubalight2 DRW-000018 10 hours 1	Documents,Drawing	LAMP	Scubalight2			
LAMP, Scubalight2 IS-000013 8 months	Installed base,Equipment	LAMP	Scubalight2			
Develop hand held scubalight ECO-000008 7 months	Change management,Engineering change order (EC...		Develop hand held scubalight			
Product datasheet DOC-000006 8 months 1	Documents,Document		Product datasheet			
Pictures DOC-000009 8 months 1	Documents,Document		Pictures			
Pictures TSA-000027 7 months 1	Projects,Tasks,Task		Pictures			
Thermal analysis report DOC-000009 8 months 1	Documents,Document		Thermal analysis report			
Mount specification DOC-000028 7 months 1	Documents,Document		Mount specification			

CONTROL








VISUALISING




WHAT IS THE VALUE?

 **Reduce the none value added tasks** and enable faster time to market

 **Avoid errors** caused by incorrect product information

 **Seamless collaboration** between teams and business systems

 **Efficiency throughout your business processes** with integrations as needed: ERP, CRM, Offer generation, Outlook





QUESTION:

Is Excel the primary creation tool for your bill of materials?



Is Excel the primary creation tool for your bill of materials?

01
YES

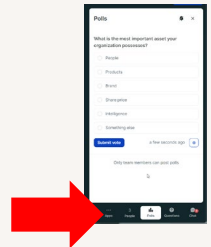
02
YES - EXPORT

03
NO – WE USE VAULT

04
NO – WE USE X

05
WHAT IS EXCEL

06
SOMETHING ELSE



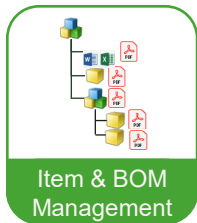
WHAT IS A BILL OF MATERIALS?



A bill of materials is an extensive list of raw materials, components, and instructions required to construct, manufacture, or repair a product or service¹

WHAT DOES YOUR BOM LOOK LIKE?

- Engineering
- Production
- Spare parts
- Materials
- Purchasing
- Full
- As built
- 150% or Maxi
- Sales
- Dynamic (ever changing)
- Always up-to-date
- Contain relevant information
- Be available



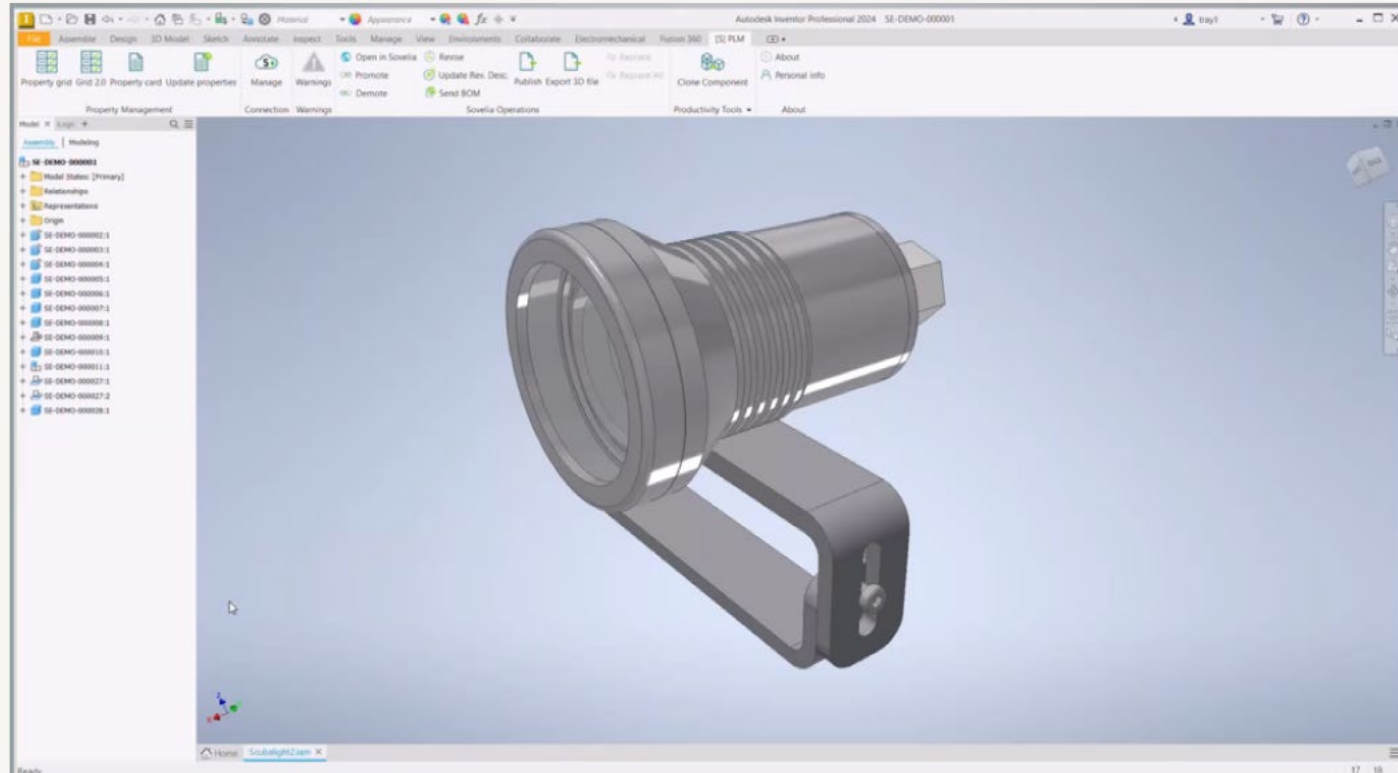
Item and BOM management

Includes items, structures, documents and other product-related information. Template functionalities can be integrated with multiple different CAD systems on the market.

WE BELIEVE

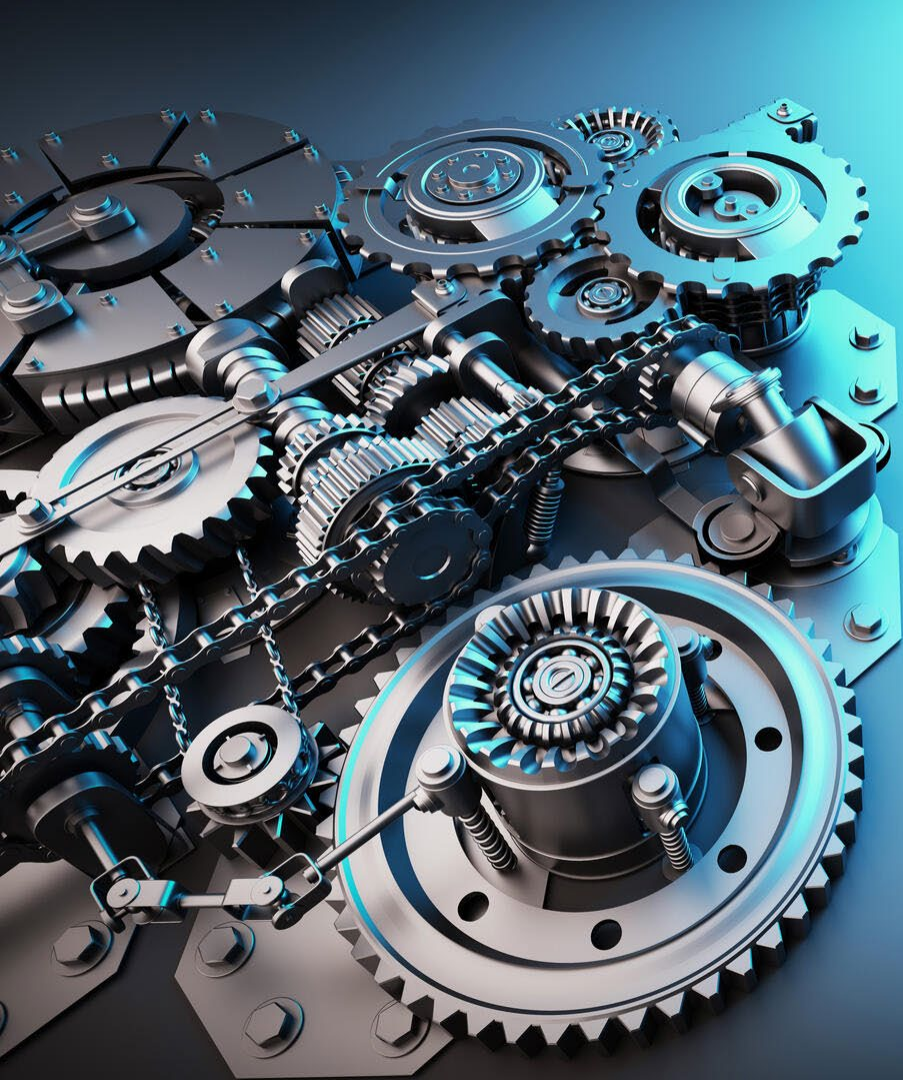
At Symetri we believe The BOM is the critical part in the process to organise and understand the design

INTEGRATED BOM





WHAT IS THE VALUE?



Add other information in the BOM (not just CAD!)



Capture the BOM for the whole of the organization to use



See the BOM your way, tailor the content to your needs



Able to make well-informed decisions



QUESTION:

How do you capture change in your organisation?



How do you capture change in your organisation?

01

**WE HAVE A
PAPER
SYSTEM**

02

**WE HAVE A
DEDICATED
SYSTEM**

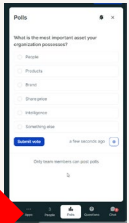
03

**WE DO NOT HAVE A
FORMAL PROCESS**



04

SOMETHING ELSE



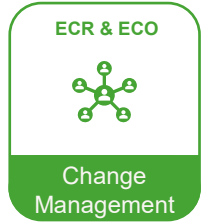


QUESTION:

Why change?

ANSWER:

Change is to improve quality



Engineering Change Management (ECM)

Offers the benefits of electronic change management, ensuring that all necessary parties work with the correct product data.

WE BELIEVE

Companies should have the flexibility to capture change in many different ways



Engineering Change Request (ECR)

Provides an easy and controlled way to document any request for change into product definition.

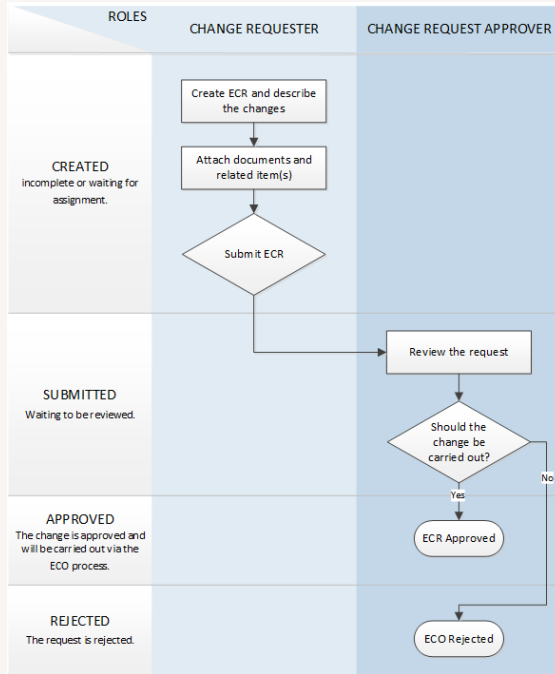


Engineering Change Order (ECO)

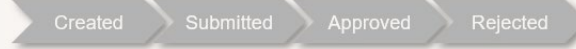
Configure to support the specific task objects making it possible to share the work between the people or teams in a controlled way. The ECO process can control item statuses on ERP systems.



STANDARD CHANGE PROCESS



ENGINEERING CHANGE REQUEST



ENGINEERING CHANGE ORDER



PROPOSE A CHANGE

The screenshot shows a CAD software interface for a product named "Scubalight2-goodman handle". The product is identified by ITM-004119 and is currently "In Production" (Revision 1 of 1). A context menu is open over the "Name" field, which contains the text "HANDLE". The menu options include: Edit, Open 3D model (in CAD-addin), Structure Search, Clone, Compare, Remove from..., Search and Link Here, Link, Link Items, Add New Documents, New Drawing, New Product Document, New Unofficial Document, New CAD Export File, Add New ECMs, New Engineering Change Request, and New Engineering Change Order. The product details table shows: Type tree: Items,01-Own design items,03-Modules; Name: HANDLE; Description: Scubalight2-goodman handle; Item type: 1-in house design; Unit: pcs; Weight (kg): 0.05.

CUSTOMISABLE CHANGE PROCESS



STANDARD CHANGE PROCESS

The screenshot displays the Sovelia software interface for a product named 'Scubalight2-Frame'. The interface is divided into several sections:

- Header:** Includes the Sovelia logo, navigation icons, and search fields for 'Type tree' and 'Status name'.
- Product Information:** Shows 'Scubalight2-Frame' (ITEM-00411) with a status of 'In Production' and 'Revision 1 of 1'. It also indicates '1P edited 1 hour' and 'Draft 1'.
- Navigation:** A menu bar with options like 'Export...', 'Select Favorites', 'Select Locked', 'Update PBOM', 'Structure [2]', '3D', 'Parents [3]', 'Top parents [1]', 'ECR [0]', 'ECO [0]', 'Manufacturers [0]', 'Production view [0]', and 'Equipments [0]'.
- Item Basic Data Table:** A table listing items related to the product. The columns are: Item (checkbox), Name, Type, Name, Description, Weight (kg), Unit, and Item.

Item	Name	Type	Name	Description	Weight (kg)	Unit	Item
<input type="checkbox"/>	FRAME, Scubalight2-Frame	O4-Part	FRAME	Scubalight2-Frame	0.25	pcs	1-1
<input type="checkbox"/>	New Scubalight 2 frame manufacturing information	Document		New Scubalight 2 frame man...			
<input type="checkbox"/>	FRAME, Scubalight2-Frame	Drawing	FRAME	Scubalight2-Frame			
- Details Panel:** A sidebar on the left containing various fields for item details:
 - Type tree: Item, 01-Own design Item, 04-Part
 - Name: FRAME
 - Description: Scubalight2-Frame
 - Item type: 1in house design
 - Unit: pcs
 - Weight (kg): 0.25
 - Buttons: Show Less ^
 - Reviewer: Empty
 - Reviewer - group: Empty
 - Text: Empty
 - Spare part: No
 - 3D driven: Yes
 - Item traceability: No
 - Serial number traced: Empty



WHAT IS THE VALUE?



Capture change and the reason for change



Standard and customizable process



Seamless integration
no silos of information



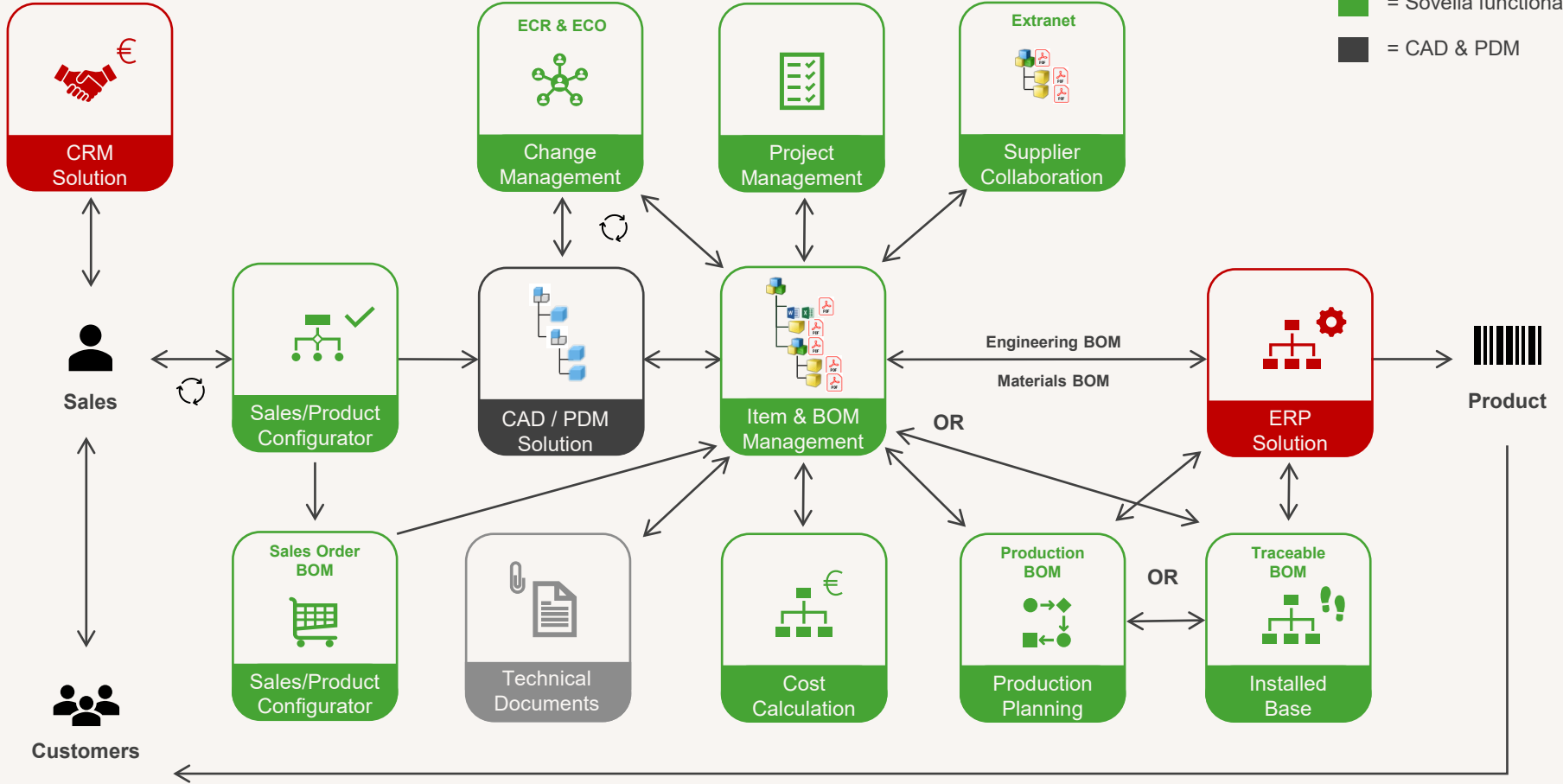
Reducing the cost to make change
by capturing change earlier in the process



SOVELIA CORE PROCESS



■ = Sovelia functionality
■ = CAD & PDM



Q

&

A



SOVELIA MEETS COMPANIES' SPECIFIC NEEDS



CAD PRODUCTIVITY

[Sovelia AutoCAD](#)
[Sovelia Inventor](#)
[Sovelia Plant](#)
[Sovelia Routing](#)



ENGINEERING PROCESS PRODUCTIVITY

[Sovelia Vault](#)



INTEGRATE DESIGN INFORMATION WITHIN BUSINESS PROCESSES

[Sovelia Core](#)



IMPROVE BUSINESS PROCESS PERFORMANCE

[Sovelia Configurator](#)



SYMETRI TECHNOLOGY

Symetri Technology solutions are developed with the mission to help companies to be more productive in their daily operations and remove waste from their business processes.



NAVIATE®



SOVELIA®



CQ™

At Symetri we have continuously expanded to provide even better leading-edge solutions and services to more markets.

1,000
EMPLOYEES

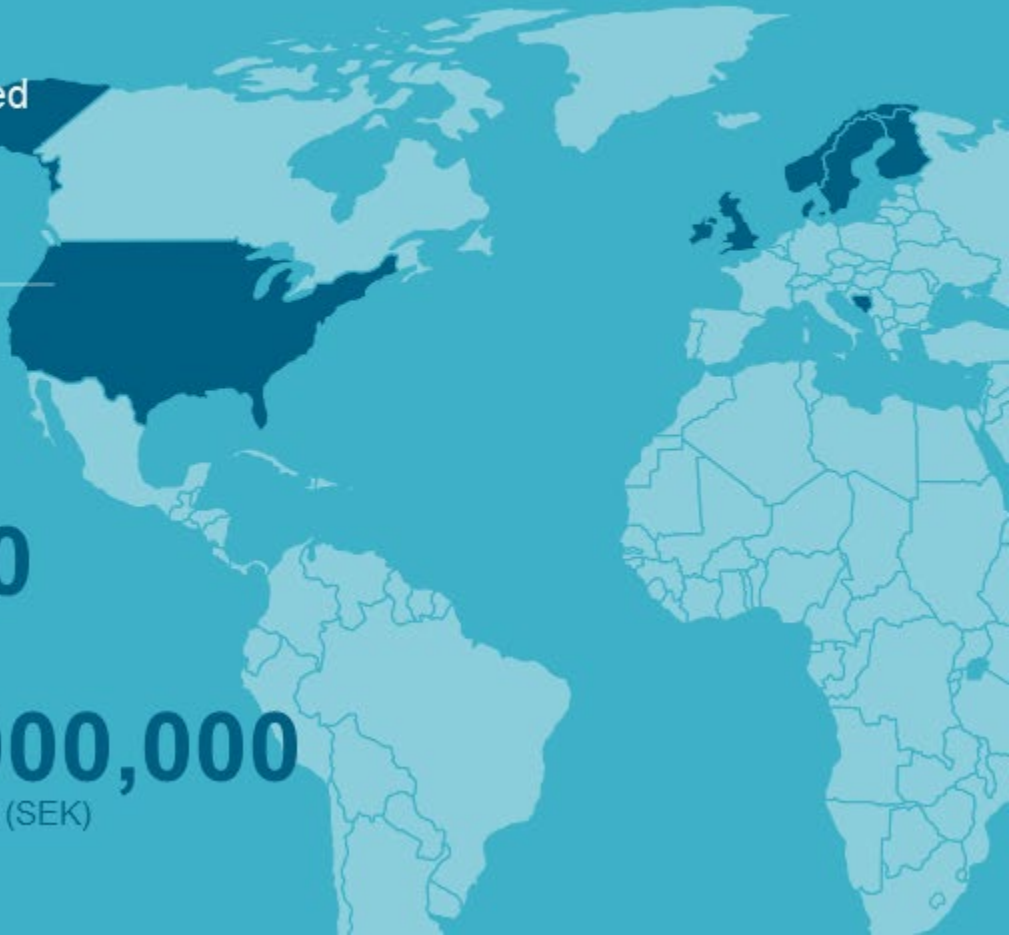
20,000
CUSTOMERS

100
DEVELOPERS

400,000
USERS DAILY

9
COUNTRIES

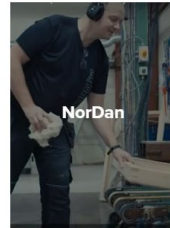
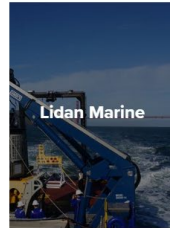
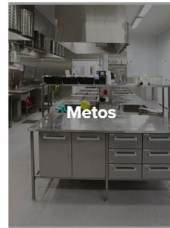
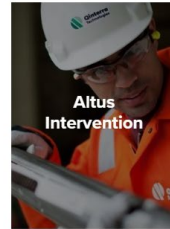
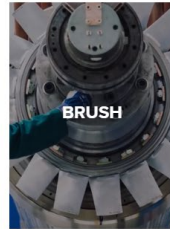
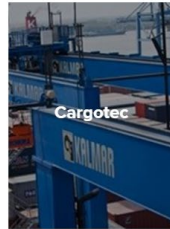
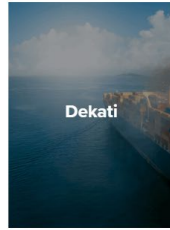
3,100,000,000
BILLION TURNOVER (SEK)







CUSTOMER CASES



More Information sovelia.com



tim.ray@symetri.com